

CHAPTER 24

WEB OF LIFE

TEXT BASED QUESTIONS

Objective Answer Type Questions

1- Select the best option.

(i) The web of life includes

(a) living beings (b) non-living things

(c) Both 'a' and 'b' (d) None of these

(ii) Which of these is not related to driving a car properly?

(a) Knowing how to drive

(b) Knowing the rules of the road

(c) Having a lot of money

(d) Having a valid driving license

(iii) The item not related to bricks is

(a) clay (b) sand

(c) water (d) kiln

(iv) The item not related to producing heat for cooking is

(a) gas (b) sunlight

(c) torch (d) electricity

(v) are not related to birds.

(a) Insects (b) Nests

(c) Eggs (d) None of these

2- Write 'T' for True and 'F' for False statements.

- (i) Soil is related to insects.
- (ii) Water is not related to man.
- (iii) Letters are related to train.
- (iv) We are related to house.
- (v) House is not related to sun.

LANGUAGE BASED QUESTIONS

3- Write the names of five natural things and five man-made things by filling in the table below.

Natural

Man-made

.....

.....

.....

.....

.....

.....

.....

.....

.....

.....

4- Match the names in Column I with their characteristics in Column II by drawing arrows.

Column I	Column II
(i) Soil	(a) Natural
(ii) Bird	(b) Man-made
(iii) Telephone	(c) Living
(iv) Water	(d) Rain

5- Match the pictures with their names and whether they are living or non-living by drawing lines. One has been done for you.

Living

Bird

Cow

Grass

House

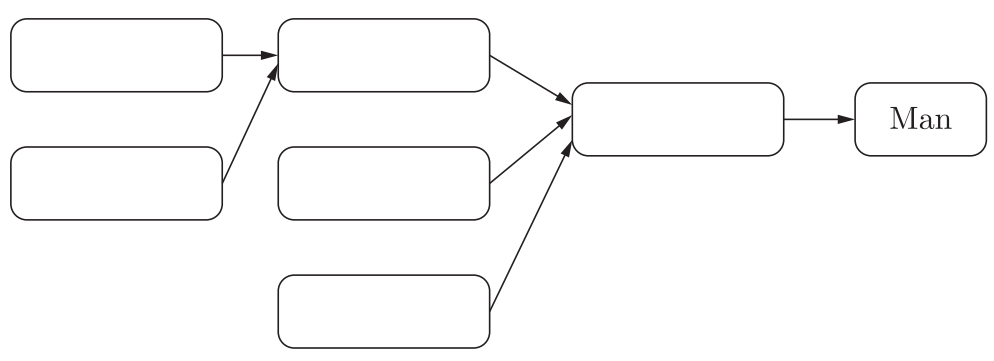
Plants

Rat

Snake

Squirrel

6- Water, bricks, wood, glass and clay are related to us because we live in a house. Show their relation to us in the form of a chain by filling in these words in the chain diagram with blank boxes given below.



7- In the pictures given in Q.6, there are some items which are called non-living, but they have many living organisms living in them, Which items are these and why?

8- Write three things needed by the living beings from nature.

(i) Plant :
.....

(ii) Bird :
.....

(iii) Man :
.....

(iv) Lion :
.....

9- Give three examples for each of the following:

(i) Sources of water

.....

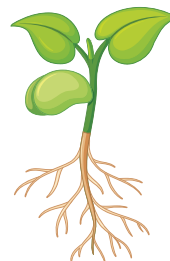
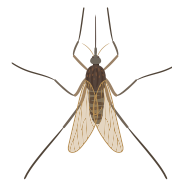
(ii) Things we get from nature for food.

.....

(iii) Sources of fibre in nature.

.....

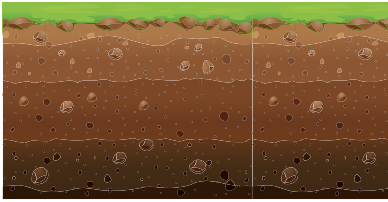


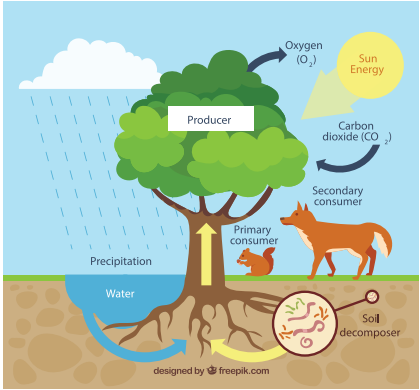
10- Circle the things that need energy from the sun in order to grow.



11- Complete the following food chains.

- (i) Plants → → Frog
- (ii) Plants → → Jackal
- (iii) → Jackal →

12- Match the importance of soil with its appropriate picture.

Column A	Column B
(i) sustain plant and animal life	 <p style="text-align: center;">Soil</p>
(ii) Medium for plant growth	 <p style="text-align: center;">Earthworm</p>
(iii) Provides home to different organisms	 <p style="text-align: center;">Rocks</p>
(iv) Forms a part of construction material	 <p style="text-align: center;">Ecosystem</p>

13- How do you depend on the soil?

14- How do you depend on the sun?

Think, Find and Write

1- Based on the chart given below, answer the questions.

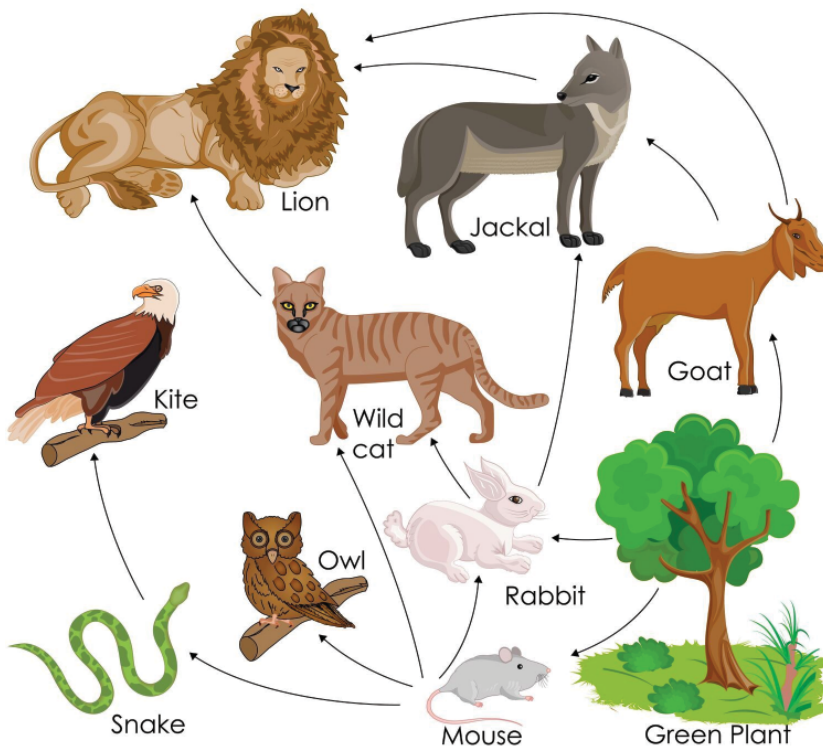
<p>Must have characteristics</p> <ul style="list-style-type: none"> • Able to move • Able to reproduce (make more organisms like itself) • Able to grow 	<p>Might have characteristics</p> <ul style="list-style-type: none"> • Be used as food by other organisms • Have leaves, roots and stems • Fly • Walk • Go to school
<p>Word/Topic/Concept Living Things</p>	
<p>Examples</p> <ul style="list-style-type: none"> • Insects • Plants • Birds • Worms • Snakes • Weeds 	<p>Non-examples</p> <ul style="list-style-type: none"> • Rocks • Steel • Air • Water • Sound • Fire

Write what things the living things are able to do, giving two examples of each. All examples must be different.

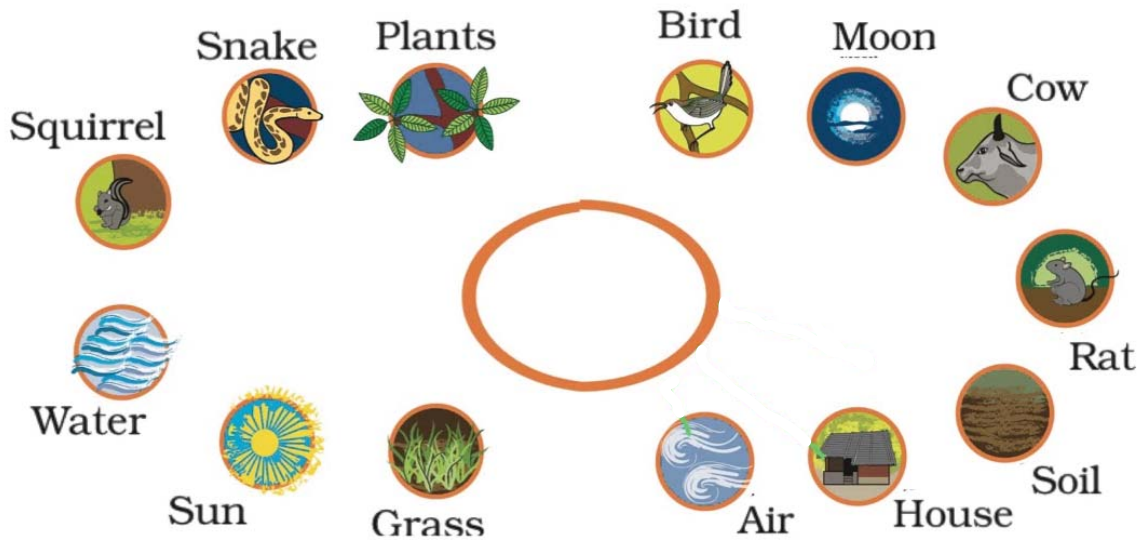
2- List all the related items to do the following jobs. One has been done to guide you for the others (everybody will not have the same answers for these jobs).
Example : Shopping : Shopping bag, Money, List of items to buy, Shop where to buy, Guarantee card, Cash memo/Receipt, Vehicle to use and so on.

- (i) Cooking
- (ii) Going to school
- (iii) Building a house
- (iv) Playing cricket
- (v) Doing homework

3- A typical food web (i.e. related plants/animals) is shown below. Observe it carefully and write what is the food of what (Hint : the arrows give you some idea).
e.g. the owl eats the rat.



4- Draw your picture in the blank space. Now join the picture with lines to all those which you feel are needed for you to live.



5- Paste pictures of three living and three non-living things.
